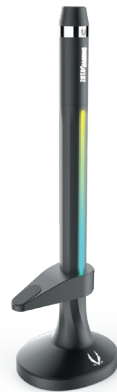


# USER MANUAL

ZOTAC GAMING  
DUO ARGB GPU SUPPORT STAND

ZOTAC.COM



## FEATURES

### DETACHABLE GPU SUPPORT ARM

Detach the arm to use individually or combined with the stand

### GPU SUPPORT CONTACT POINT

### TWIST TO ADJUST DESIGN

Twist the locking nut to adjust height

### MAGNETIC BASE

Designed for easy installation and increased stability (remove rubber cover before installing to the stand)

### GPU SUPPORT CONTACT POINT

The non-slip rubber pad provides padding and dampen vibrations with the graphics card

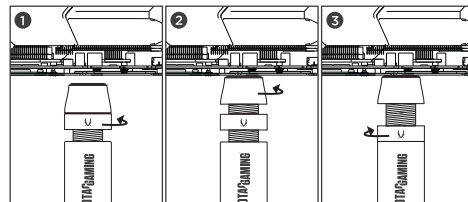
### HEIGHT ADJUSTABLE GPU SUPPORT MODULE

The tool-free support module can be easily height adjusted to the graphics card position

### MAGNETIC BASE

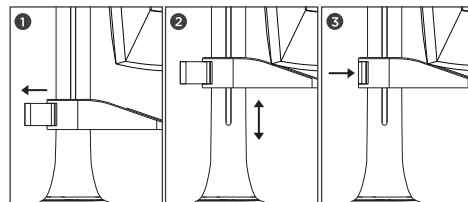


## QUICK SETUP



### DETACHABLE GPU SUPPORT ARM

- 1 Twist the silver screw nut counterclockwise to unlock the brace
- 2 Adjust height by twisting the top nut
- 3 Twist the silver nut clockwise towards the base to secure the position



### GPU SUPPORT STAND

- 1 Pull the clip outward to release the support module
- 2 Slide the support module position up or down to allow the graphics card to rest on the GPU support card contact point
- 3 Push the clip in to secure the support module position

### COMBINED INTO ONE

Remove the rubber cover at the base of the Support Arm. Place the arm on top of the stand and rotate clockwise to install it into position. Then put the rubber cover on top of the arm as padding.

## SPECIFICATIONS

Usage	GPU SUPPORT
Brand	ZOTAC GAMING
Name	DUO ARGB GPU SUPPORT STAND
Material	Metal, ABS, Silicone
Lighting	ARGB
Power	5V 3-pin
Dimensions (LxWxH)	Stand ≈76.5 x 60 x 172.5 mm Detachable Arm ≈13.3*16.4*60 (Max 80) mm
Cable Length	420mm
Color	BLACK

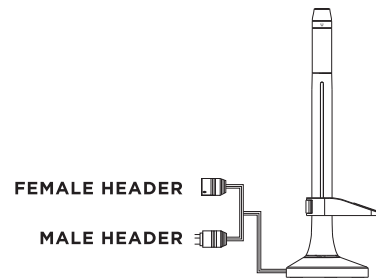
## RGB INTERFACE



- 1 5V 3-Pin ARGB header for lighting synchronization with RGB compatible components (e.g. graphics card or motherboard).



- 2 Equipped with one 3-Pin conversion cable to allow quick connection with RGB devices.



### NOTICE:

To sync ARGB lighting with a compatible hardware, connect the 3-pin connector of ZOTAC GAMING DUO ARGB GPU SUPPORT STAND to the ARGB header of the supported component. Please ensure that the required voltage and signals match the available power source before connecting.

### MANUFACTURER: SHENZHEN DIGTEC TECHNOLOGY CO., LTD

F5(East), B4, Donglongxing Tech Park, 46 Huaning Rd,  
Dalang, Longhua District, Shenzhen, China

